

Provider Performed Microscopy Exam 2002

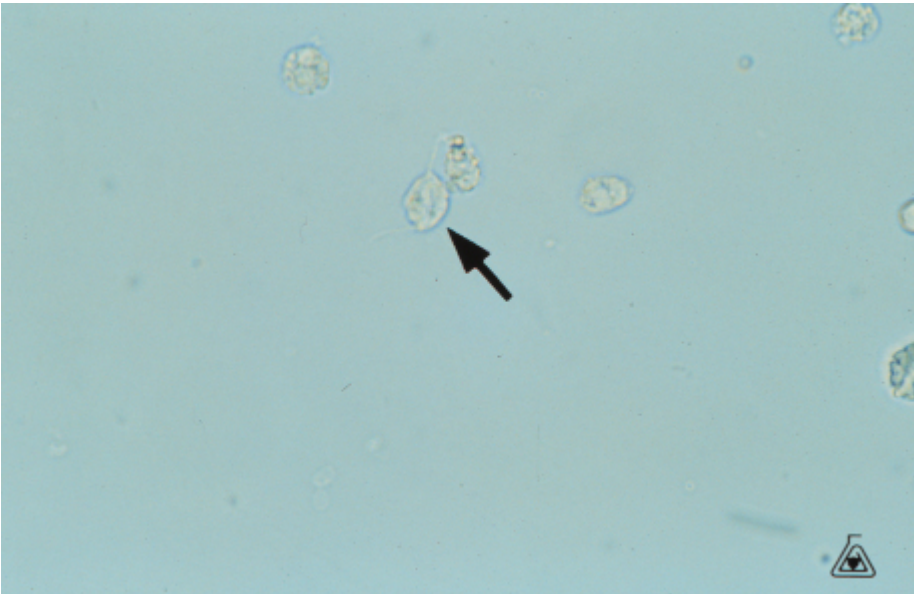
1) The urine depicted was obtained from a 25 year old female during a routine gynecological visit. Direct wet mount of vaginal secretions revealed similar structures. Identify the objects in the [figure below](#).

- A. Mucous Strand
- B. Yeast/Fungi
- C. Exogenous Fiber
- D. Free Fat Globules



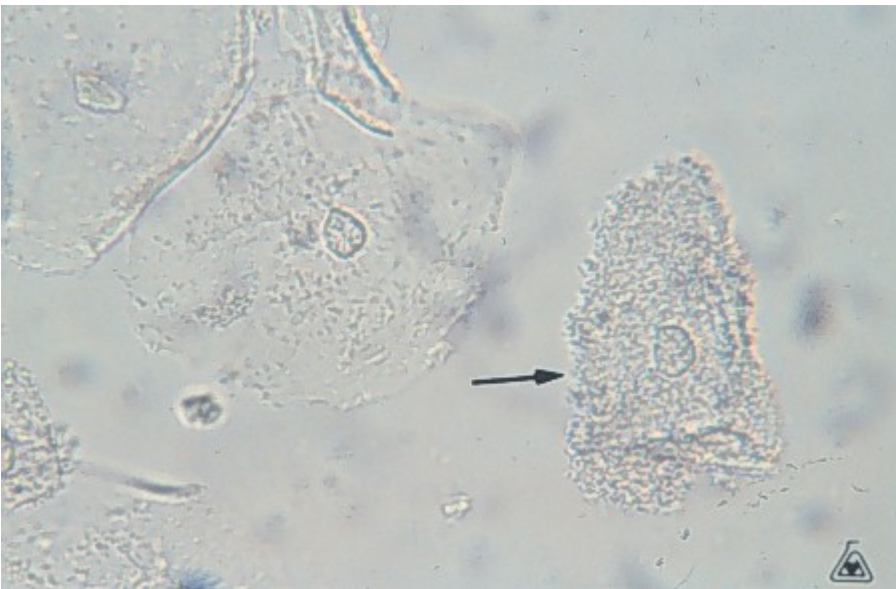
2) Microscopic evaluation of urine sediment from a 31 year old female patient reveals the object depicted in the [figure below](#). On direct wet mount, the object exhibits a "jerking" motility. Identify the arrowed object in the figure below.

- A. White Blood Cell
- B. Renal Epithelial Cell
- C. Trichomonas vaginalis
- D. Urinary Artifact



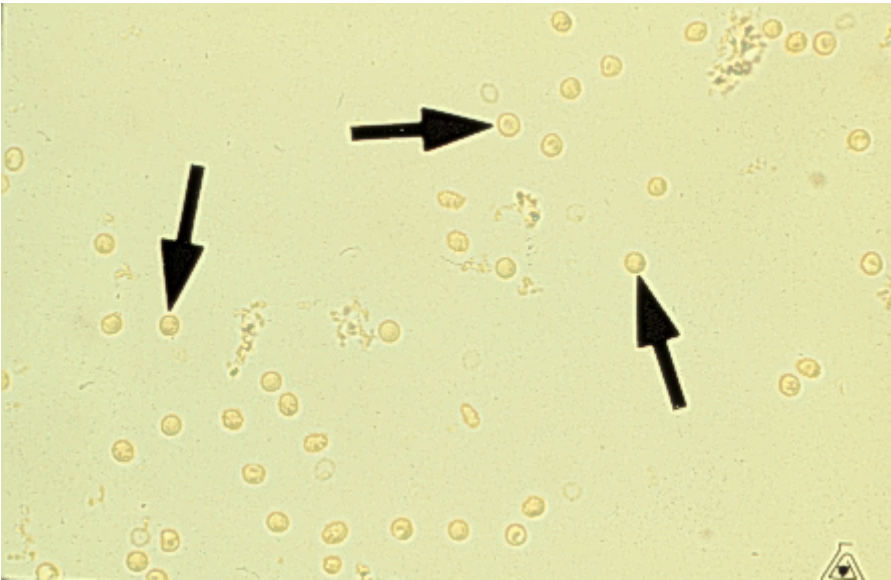
3) Microscopic evaluation of vaginal fluid from a 33 year old female reveals the arrowed object in the [figure below](#). The object is a:

- A. Normal Squamous Epithelial Cell
- B. Clue Cell
- C. White Blood Cell
- D. Red Blood Cell



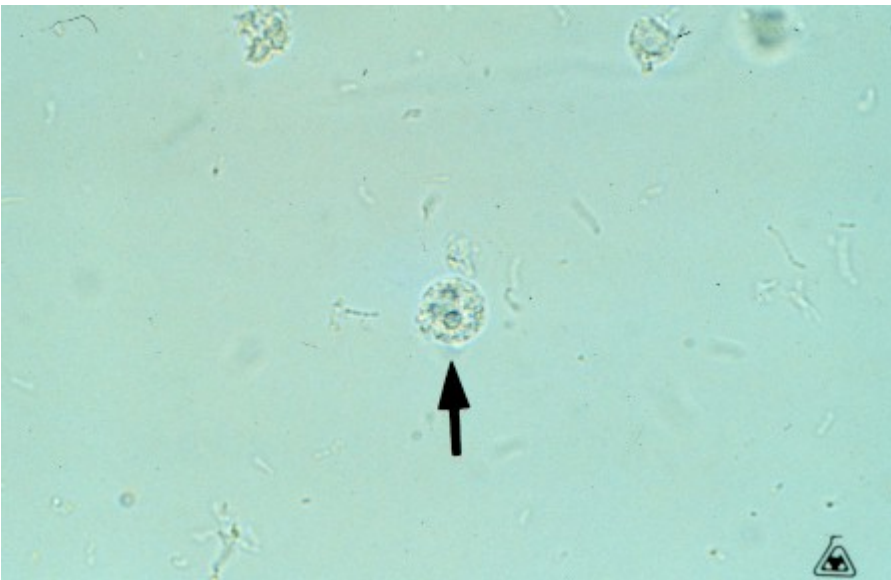
4) Microscopic evaluation of urine sediment from a 16 year old female with a history of hematuria. Chemical urinalysis revealed a pH of 5.0, a protein of 300 mg/dL, and was positive for blood. Identify the arrowed object in the [figure below](#).

- A. Red Blood Cell
- B. White Blood Cell
- C. Yeast Cells
- D. Starch Granules



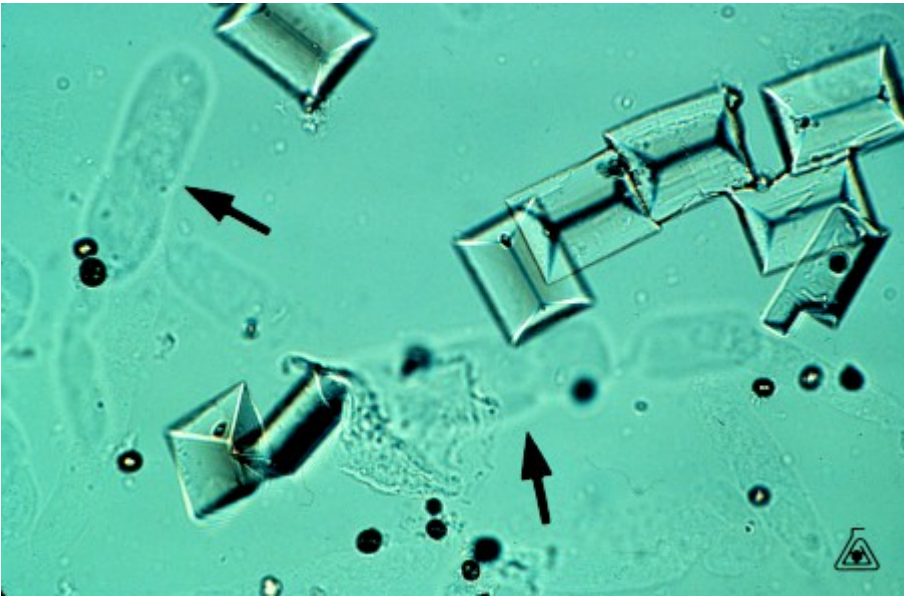
5) The patient whose urine is shown in the figure presents with pain and burning upon urination. The urinalysis revealed: specific gravity: 1.005; pH: 5.0; glucose: negative; blood, protein, nitrate and leukocyte esterase: positive. Identify the arrowed object in the figure below.

- A. Trichomonas vaginalis
- B. White Blood Cell
- C. Transitional Epithelial Cells
- D. Renal Epithelial Cells



6) The objects depicted in the figure below, were obtained from urine collected during a routine physical exam on a 42 year old female patient. The urinalysis revealed a pH of 8.0 and was otherwise unremarkable. Identify the arrowed objects.

- A. Mucous Strands
- B. Hyalin Casts
- C. Cotton Fibers
- D. Fecal Contamination



7) Identify the large, refractile, rectangular objects also found in the [figure below](#).

- A. Urinary Artifacts
- B. Urinary Crystals
- C. Fat Free Globules
- D. Contaminants



8) Microscopic examination of urine sediment from a patient with recurrent urinary tract infections is depicted in the [figure below](#). Urinalysis showed: specific gravity: 1.010; pH: 7.0; blood: positive; leukocyte esterase: positive; glucose, ketones, protein and nitrate: negative. Identify the arrowed object in figure.

- A. Exogenous Fiber
- B. Hyalin Cast
- C. Granular Cast
- D. Red Blood Cell Cast

