



Course Your Future In Medical Technology/Clinical Laboratory Science

- The School of Medical Technology/Clinical Laboratory Science



Career Opportunities



THE BOTTOM LINE

If you like solving mysteries - taking what seems like unrelated information and organizing it to draw sound conclusions - you should investigate a career in the clinical laboratory sciences.

As a scientist, investigator, skilled laboratorian and theorist, the clinical laboratory scientist is helping shape the very core of treatments used in today's highly specialized health care industry. From hospitals and independent laboratories to pharmaceutical and industrial companies, clinical laboratory scientists are needed. As a result, the demand has never been greater.

WHAT IS CLINICAL LABORATORY SCIENCE/MEDICAL TECHNOLOGY?

It is an allied health science that concentrates on analysing blood, body fluids and tissue samples. Clinical laboratory scientists work with physicians and other health professionals to ensure that the best possible care is provided. Often, more information about a patient's condition is required than can be determined by a physical exam. That's where the clinical laboratory scientist comes in. By performing a variety of laboratory tests and confirming the accuracy of the results, a skilled clinical laboratory scientist assists in determining the presence of disease and how the disease is responding to treatment.

One of the most rewarding aspects of clinical laboratory science is "detecting" a disease before it becomes a serious problem. By performing tests on blood, body fluids or tissue samples, the clinical laboratory scientist can identify a disease at its earliest stages. With this information, the doctor can immediately begin treatment, often literally saving a patient's life.

If you'd like to experience the challenges and rewards that come with a career in clinical laboratory science, you should join us at the St. John Health System School of Medical Technology.



The St. John Health System School of Medical Technology

Located within the St. John Health System, our program provides exposure to a patient population and unique cases other facilities don't get. You'll be actively involved with exciting challenges available only from a health system of this calibre.

Our School of Medical Technology prepares you for an exciting and rewarding future. No other program offers the kind of environment, experience or in-depth training necessary to be well versed in virtually all areas of the clinical laboratory sciences.

Our small class size, close one-to-one instruction and state-of-the-art facilities provide you with the opportunity to gain practical experience while receiving your education. It's a unique environment that exposes you to all areas of today's sophisticated laboratory while working directly with physicians, laboratories and other allied health professionals.

We believe it's important to you to actually practice what you learn in the classroom. That's why we mix the classroom instruction with laboratory experiences. Having the opportunity to immediately perform procedures in the laboratory not only reinforces your education, but also provides you with a sense of what the real working environment is like.

Our School is accredited by the National Accrediting Agency for Clinical Laboratory Sciences (NAACLS). For program accreditation information contact:

NAACLS
8410 West Bryn Mawr Avenue, Suite 670
Chicago, IL 60631
(773) 714-8880
www.naacls.org

After completing our program, you'll have the experience, scientific knowledge and technical skills necessary for the required national certifying examinations. Those graduating from the program have had a 99 percent pass rate.

THE PROGRAM

Our one-year program begins in late July/early August. You will spend approximately 40 hours a week, 8 hours a day dividing you time between the classroom and the laboratory. Instruction includes technical and clinical aspects of laboratory analysis with clinical correlation, and theory and concepts in the clinical laboratory and behaviour sciences.

In the laboratory component, you will rotate throughout laboratory areas at the many St. John Health System Laboratories. Under supervision, you will practice different skills and techniques specific to the laboratory you are in. This provides you with in-depth exposure to a large variety of specimens and procedures while allowing you to experience the "real" working environment and conditions. Although all students spend the same number of weeks in each rotation, students do not take the rotations in the same sequence.

THE COURSES

During the structured competency-based clinical education program, you will participate in the following:



Classroom Instruction

- *Orientation*
- *Behavioural Sciences*
- *Body Fluids*
- *Clinical Chemistry*
- *Clinical Microbiology*
- *Coagulation*
- *Hematology*
- *Immunochemistry*
- *Immunopathology*
- *Information Systems & Technology*
- *Molecular Biology*



Clinical Laboratory Rotations

- *Orientation*
- *Automated and Rapid Response Testing*
- *Clinical Microbiology and Virology*
- *Immunochemistry*
- *Immunopathology*
- *Molecular Biology*
- *Phlebotomy*
- *PM Shift*
- *Special Testing*

Enrichment Experiences



- *Attend sponsored seminars & conferences*
- *Client Account Specialist shadowing*
- *Client Support Services shadowing*
- *Clinical case studies & discussions*
- *Management projects*
- *Point-of-Care Testing*
- *Professional & Clinical presentations*
- *Research projects*
- *Teaching assignments*

Classroom instruction and rotations are frequently revised to keep abreast of current practices in clinical laboratory science.

When you successfully complete the program, you will receive a certificate and are eligible for certification by national or state agencies. If you are from an affiliated college, you are eligible to receive a degree from that institution.

THE FIRST STEP

Our School is affiliated with Michigan Technological University and Oakland University. Before you apply to our program, you must complete your pre-clinical academic requirements as outlined in each university's catalogue. We do accept applications from non-affiliated-university students if pre-clinical academic requirements are completed or a Bachelor's degree has been obtained and all other admission requirements are met. Specific admission requirements are included with the application package.

WHO GETS ACCEPTED?

Student selection is based on a number of factors including: academic affiliation, academic performance, references, interview and related experience.

At St. John Health System School of Medical Technology, we provide equal opportunity to all and comply with the letter and spirit of all federal and state non-discrimination laws.

Prior to admission, you are required to pass a medical examination given by the hospital's Occupational Health department.

HOW TO APPLY

If you would like to apply, we will send an application package (including deadline dates and admission requirements) to you upon written or e-mail (margaret.kluka@stjohn.org) request.

Qualified candidates will be interviewed. The School's Selection and Admission committees will review all factors. The Committees make the final selection of students.

FINANCIAL INFORMATION

- A. **ESTIMATED COSTS** (in addition to living expenses & transportation)
1. You are required to purchase you own TEXTBOOKS; however, we have made arrangements through the hospital's Purchasing department for student discounts.
 2. You are responsible for UNIFORMS, SCRUBS and/or LABORATORY COATS. We provide personal protective apparel and devices necessary in the clinical rotations.
 3. Students are responsible for their own HOUSING. St. John Hospital and Medical Center owns an apartment complex that is available on a limited basis to students. Located near Harper Woods, the apartments are within easy walking distance from the hospital.
 4. You are responsible for all OTHER SUPPLIES.
- B. **FINANCIAL ASSISTANCE**
1. We do not charge TUITION for the School of Medical Technology.
 2. STIPEND/SCHOLARSHIP:
 - \$550 monthly without health insurance option
 - \$350 monthly when health insurance option selected
 3. LOAN PROGRAM & FORGIVENESS: Available through Human Resources department
 4. You are included in the established HEALTH SERVICE PROGRAM of the health system. You may select to receive health insurance through St. John Health System's Smart Plan.
 5. St. John Health System provides general and professional LIABILITY INSURANCE coverage for you during the program.
 6. MEALS may be purchased at discounted employee rates in the hospital cafeteria.
 7. PARKING is available to you free of charge.

Additional Information You Should Know

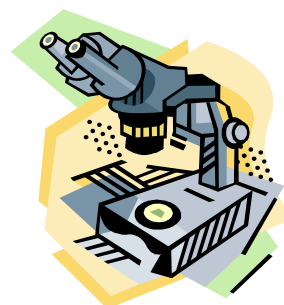
EMPLOYMENT OPPORTUNITIES

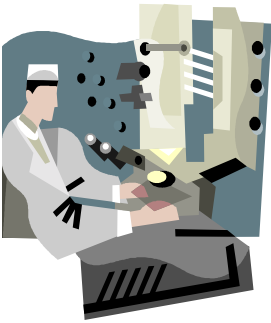
Employment opportunities exist for our students in specific laboratory departments, at different health system laboratories and/or for specific projects.

FUNCTIONAL EXPECTATIONS

Interns enrolled in the School of Medical Technology must have the following abilities-

1. **OBSERVATION**
 - accurately observe demonstrations and exercises in which biological fluids and products are being tested for their biochemical, hematological, immunological, microbiological and histochemical components
 - characterize color, odor, clarity and viscosity of biologicals, reagents or chemical reaction products
these determinations might be made by the aid of simple and complex instruments and microscopes
 - possess functional use of the senses of smell, vision and somatic sensation
2. **COMMUNICATION**
 - communicate orally and in writing
 - read and comprehend written material in order to correctly and independently perform laboratory test procedures
 - communicate effectively and efficiently with all members of the healthcare team





3. PSYCHOMOTOR

-
-
- sufficient motor function to perform all tasks that are normally expected within the scope of practice for the practitioner in the workplace, e.g. collect blood specimens; grasp with one or both hands; bend, stoop, stand and lift; manipulate instruments that require eye-hand coordination; normal or corrected vision to perform microscopic work, discriminate color, observe and record on graphs or charts and read manuals; normal, corrected or aidable hearing; perform manual laboratory procedures with dexterity; ability to operate computers

4. INTELLECTUAL AND COGNITIVE

- measure, calculate, analyze, synthesize, integrate and apply information
- use sufficient judgment to recognize and correct performance
- problem solve unexpected observations or outcomes of laboratory test procedures

5. BEHAVIORAL AND SOCIAL ATTRIBUTES

- possess the emotional health required to use their intellectual abilities fully, i.e. Exercising sound judgement, promptly completing all responsibilities, being able to work in a changing and stressful environment, displaying flexibility and functioning independently in the face of uncertainties or problems that may arise

6. ETHICAL STANDARDS

- demonstrate professional demeanor and behavior
- perform in an ethical manner in dealing with peers, faculty, staff and patients

7. ACADEMIC PERFORMANCE

- obtain relevant information from lectures, seminars, laboratory sessions or exercises, clinical laboratory rotations and independent study assignments
- use computer-based examinations to assess and improve educational outcomes of the program expected to sit for examinations (written, practical and oral), complete written assignments, deliver presentations, and perform required laboratory practice with and without supervision



POLICIES

School and health system policies are discussed upon request and will be provided to students upon admission.

THERE'S AN EXCITING FUTURE AHEAD

Technical skills, scientific knowledge, accuracy, reliability and dedication are qualities required to remain in the forefront of this fast-paced, changing field. If you're investigative and analytical, and like to do detective work, it's time for you to course your future in clinical laboratory sciences.

For more information, or application materials, please contact:



I

**Program Director
School of Medical
Technology
St. John Clinical
Pathology
Laboratories
19251 Mack
Avenue • Grosse
Pointe Woods, MI
48236
Phone: (313) 343-
3508**